

LabVIEW Anwender Treffen

Was ist neu in LabVIEW 2014

Marcel Krenz

<http://www.fhi-berlin.mpg.de/pc/labview>

06.11.2014

Fritz-Haber Institute, Berlin



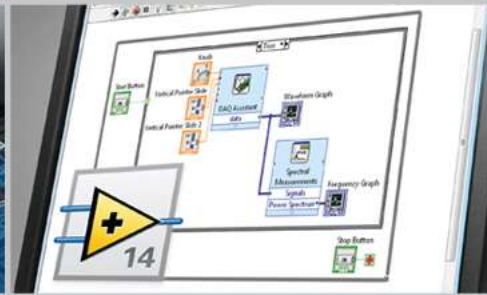
Accurate Data Acquisition With
the Latest Technology



Extended Deployment Options
for Built-In Analysis Routines



13 Coding Productivity
Enhancing Features

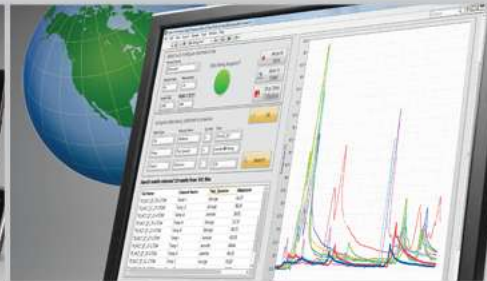


LabVIEW™ 2014

Acquire, analyze, and visualize any data set to make
informed decisions fast.



Expanded Interface Development
and Deployment Options

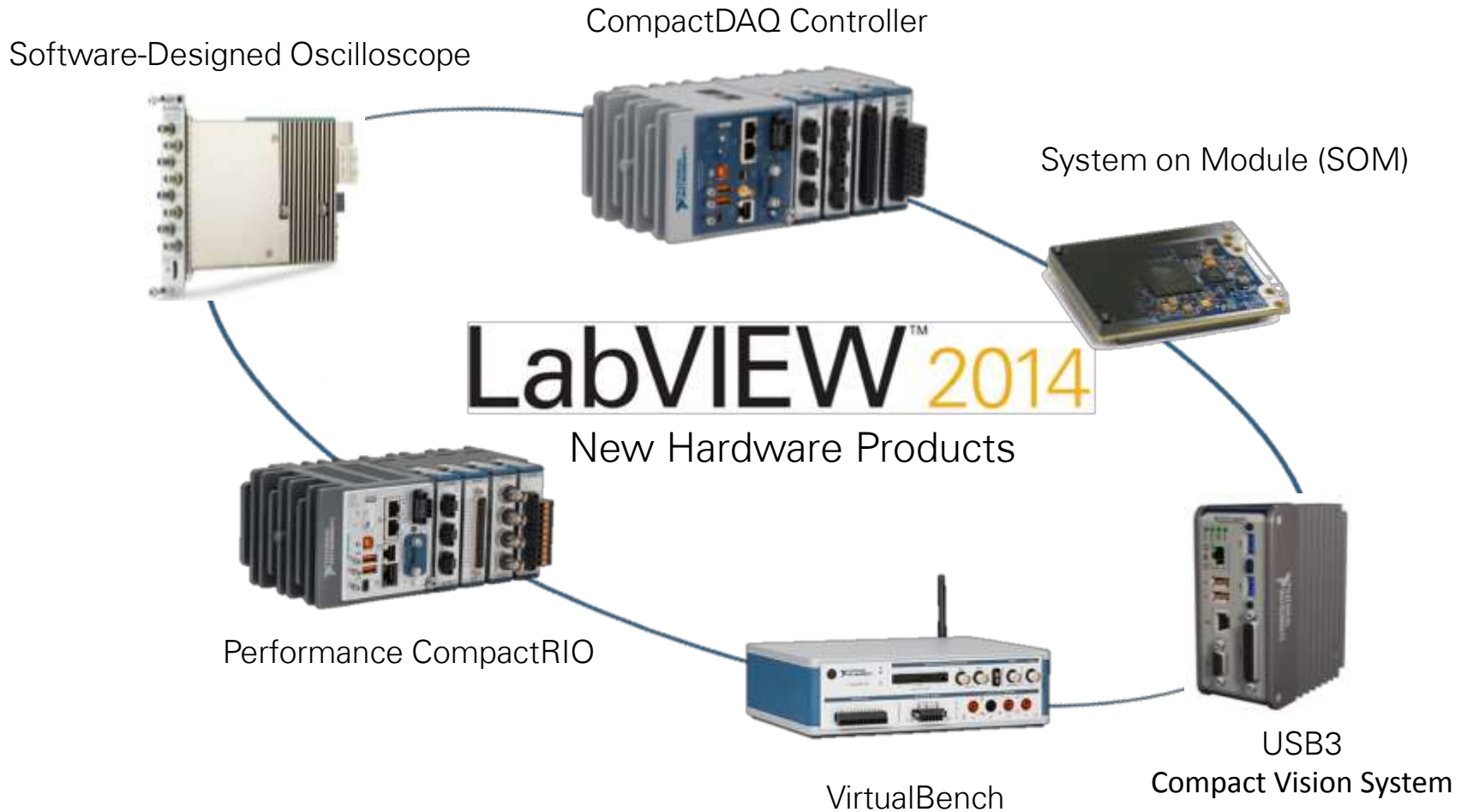


Global Solutions to Mine
and Search Data



Innovate With a
Community

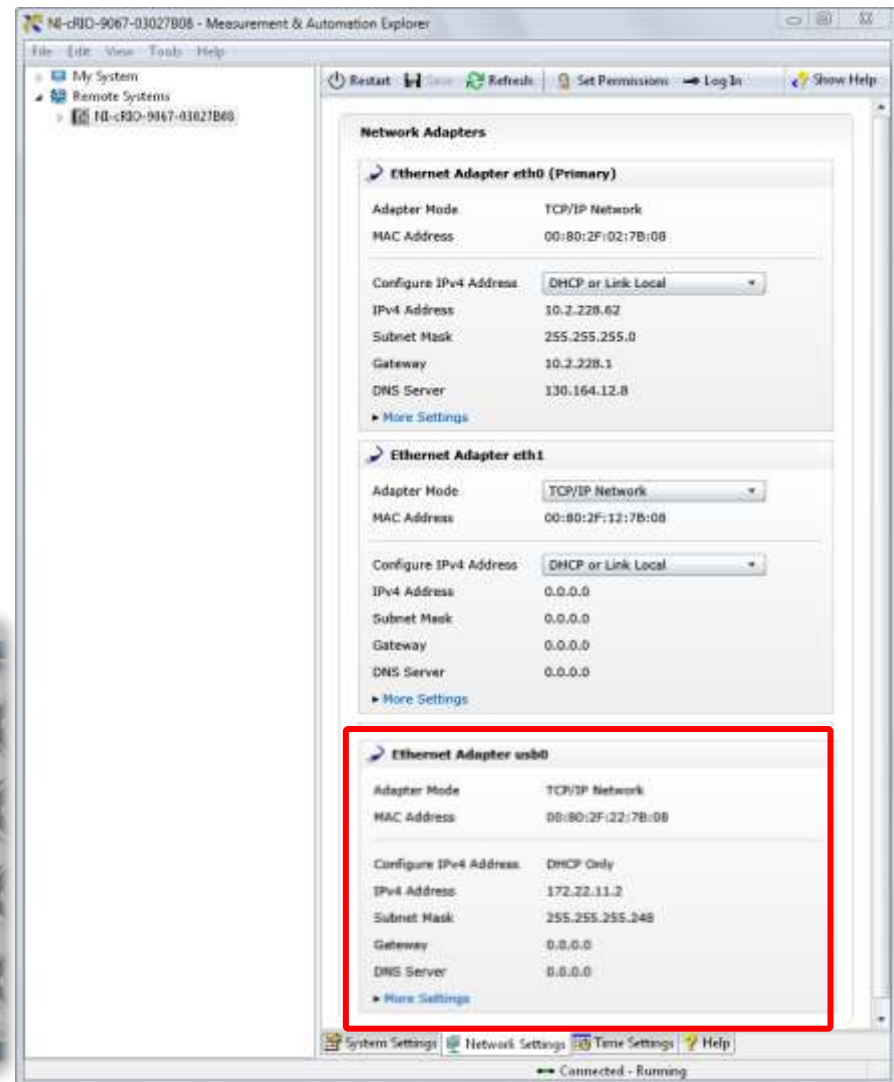
Unrivaled Integration With the Latest Technology



Simplified Connection to Real-Time Targets

Connect With USB

New NI Linux Real-Time targets use **Ethernet over USB** to connect to the host computer





Value Added to Existing LabVIEW Editions

Full Edition

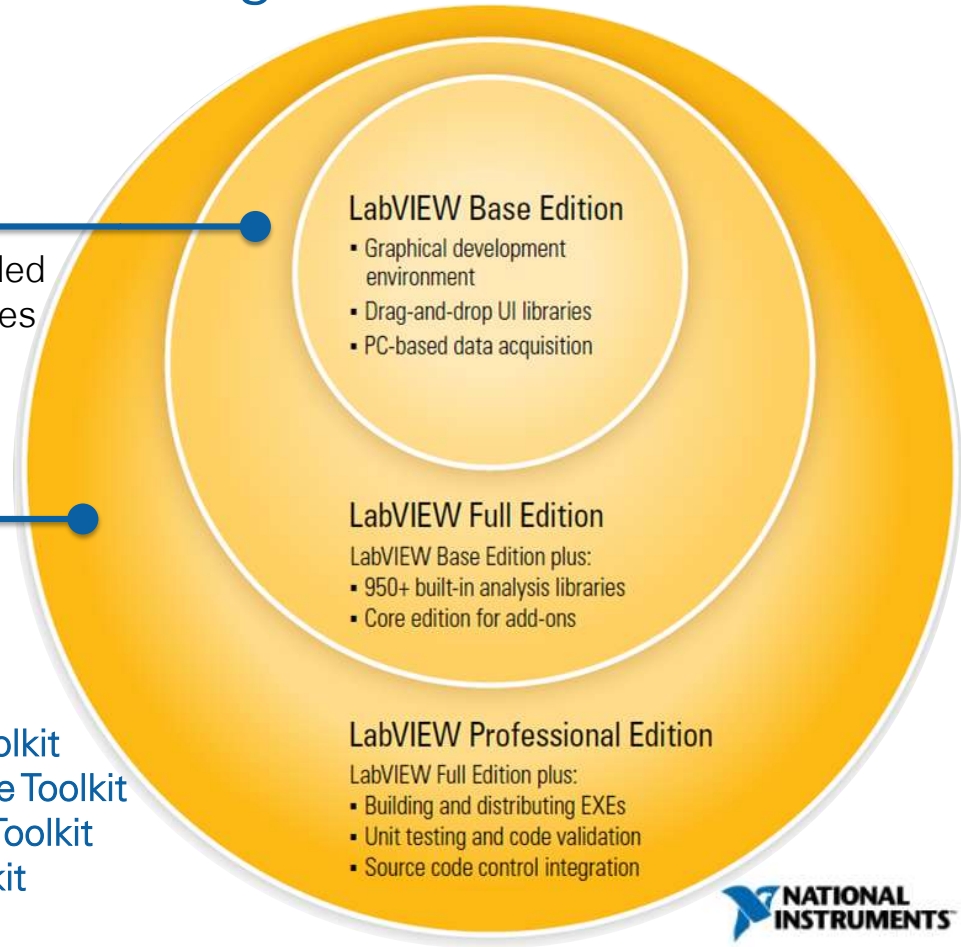
Make advanced control applications through included **PID and Fuzzy Logic** palettes

Professional Edition

Trace low-level bugs, validate coding practices, and manipulate data through the now included:

- **VI Analyzer Toolkit**
- **Unit Test Framework Toolkit**
- **Desktop Execution Trace Toolkit**
- **Database Connectivity Toolkit**
- **Report Generation Toolkit**

ni.com



New Taskbar Icon

- Easily differentiate between LabVIEW versions
- Suggested by 500+ [Idea Exchange](#) kudos



New Taskbar Icon

32-bit



64-bit



LabVIEW™ 2014

What's New in LabVIEW 2014

Kellis Garrett Wiseman

NI Field Sales Engineer

Troubleshoot Faster With Guided Error Debugging

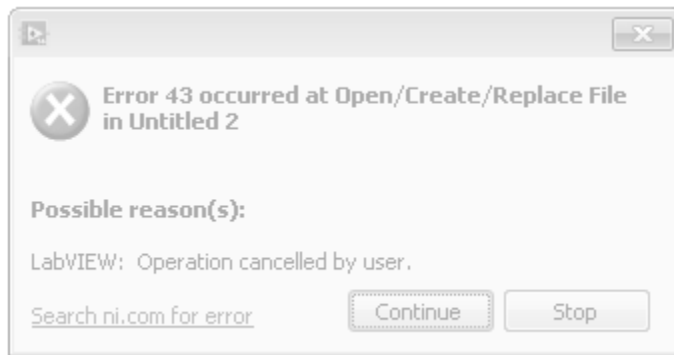
Embedded resource links

Why do I get Error 43 when using the Open/Create/Replace File VI?

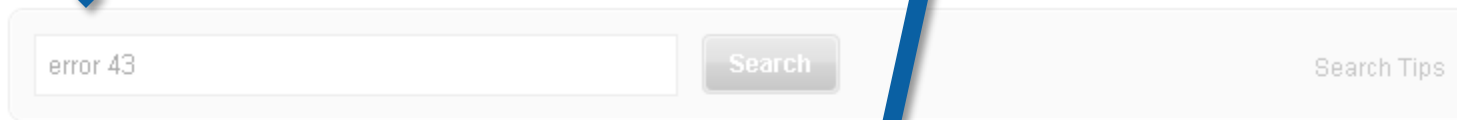
Primary Software: LabVIEW Development Systems>>LabVIEW Professional Development System
Primary Software Version: 8.2
Primary Software Fixed Version: N/A
Secondary Software: LabVIEW Development Systems>>LabVIEW Full Development System

Problem:
When I use the Open/Create/Replace File VI, I have the option to select a file path or cancel the operation. If I choose **Cancel** I get the error, **Error 43 occurred at Open/Create/Replace File in [VI Name]** .

1. Error Dialog



2. Search Result



1-10 of 3,564 Show 10 20 30 results per page

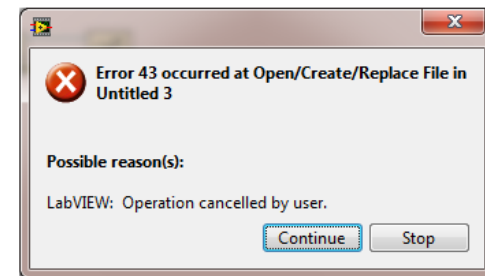
1 2 3 4 5 6 7 8 9 10 Next

Why do I get Error 43 when using the Open/Create/Replace File.vi?

I get Error 43 when using the Open/Create/Replace File.vi? Primary Software: LabVIEW Development Systems>>LabVIEW... following error, ...

digital.ni.com/public.nsf/allkb/E78D4D60B08E4CCE862572970058B706

3. Solution



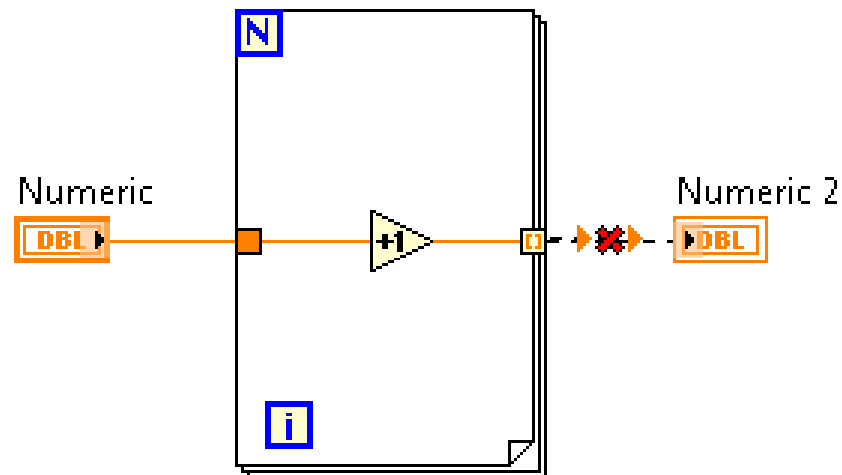
Time-Saving Development Tools

Automatic shift register creation



LabVIEW Idea Exchange

- For Loops output arrays by default



LabVIEW 2013

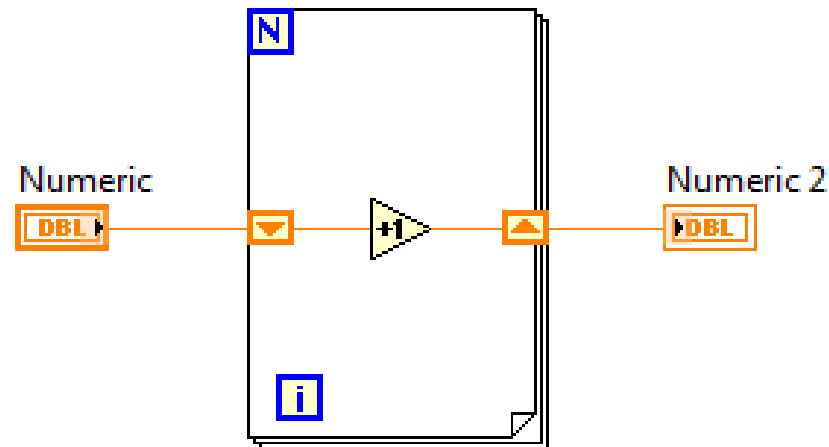
Time-Saving Development Tools

Automatic shift register creation



LabVIEW Idea Exchange

- For Loops output arrays by default
- Context-sensitive to wired outputs
- Shift register creation matches logical flow



LabVIEW 2014

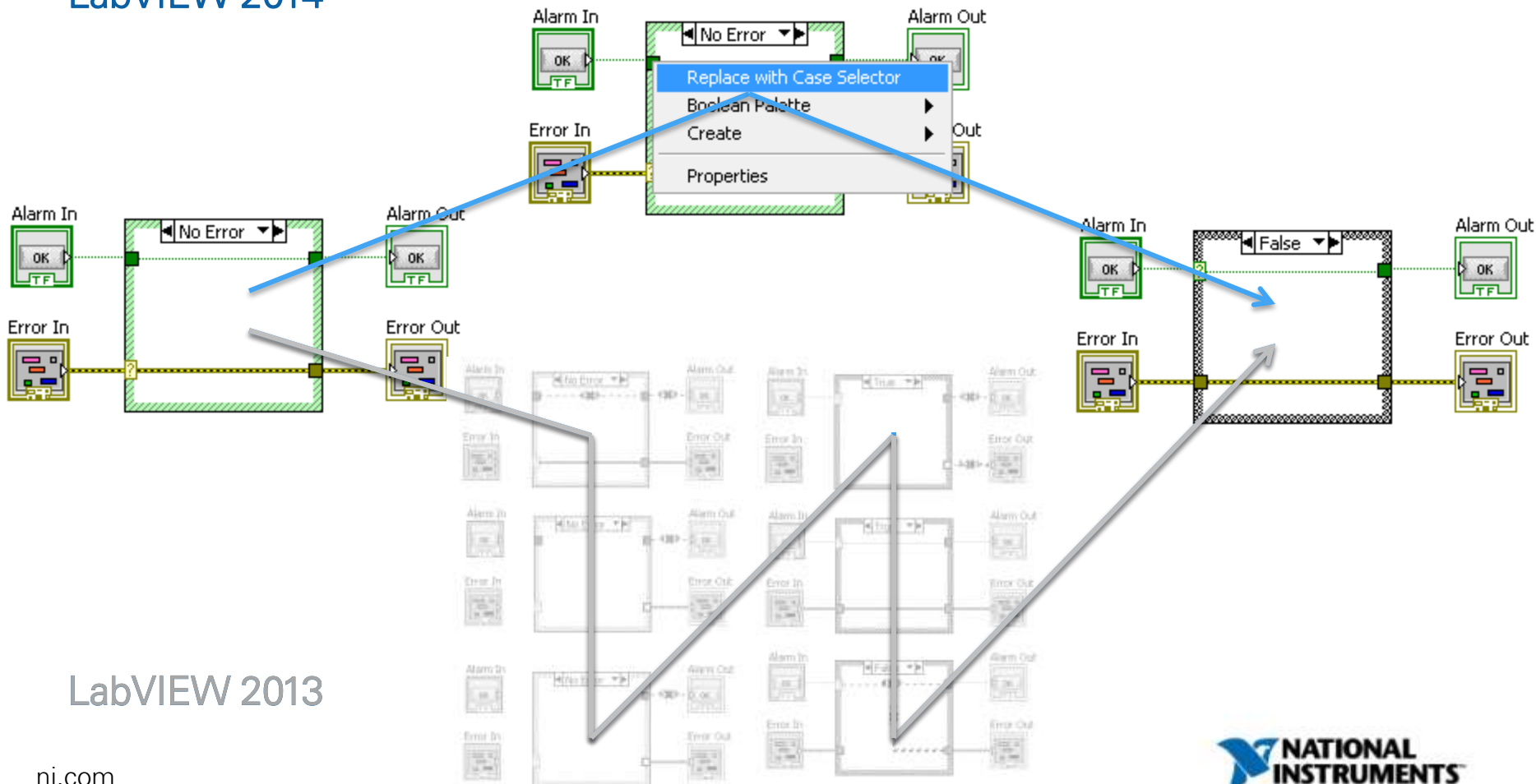
Time-Saving Development Tools

Replace case structure tunnel with selector



LabVIEW Idea Exchange

LabVIEW 2014



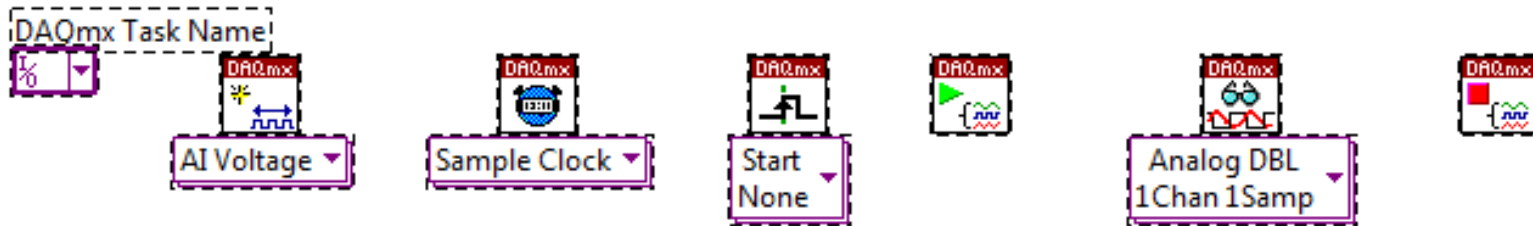
LabVIEW 2013

Time-Saving Development Tools

Auto-Wire Quick Drop shortcut



LabVIEW Idea Exchange



<Ctrl-Space>
<Ctrl-W>



Data Dashboard for LabVIEW 2.2

Alternate Servers

Now you can set up one dashboard to monitor multiple targets and use the drop-down menu to switch where the data is streaming from while the dashboard is running



Multiplot

Data Dashboard now supports 2D array of numerics as a data type for charts and graphs

Android Tablets

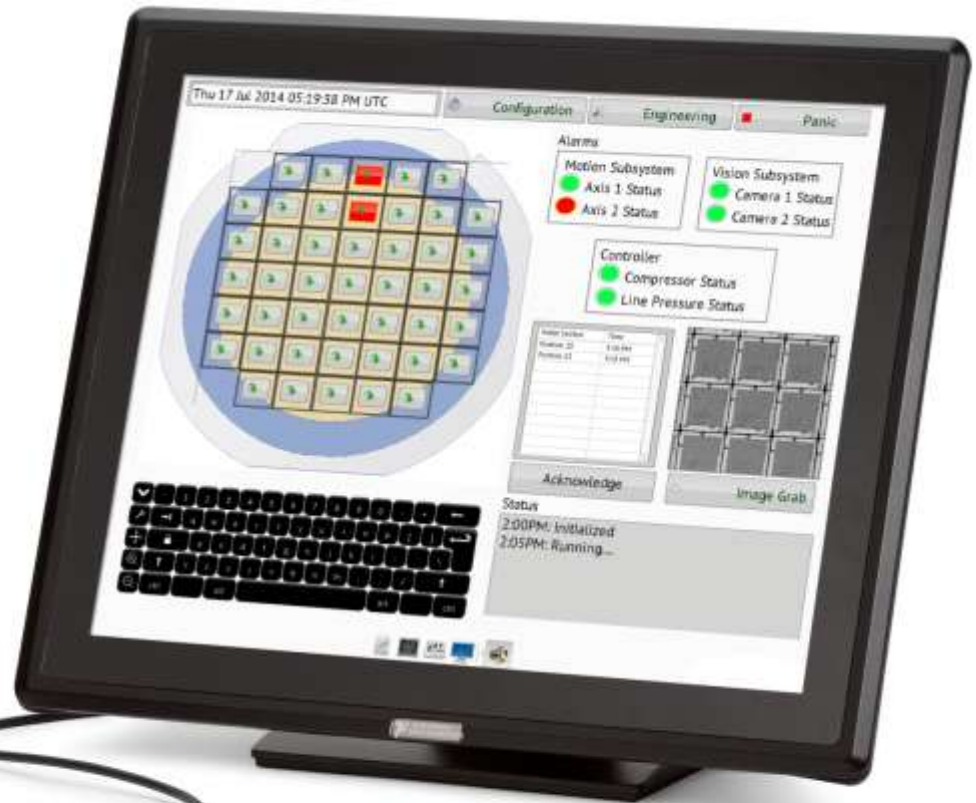
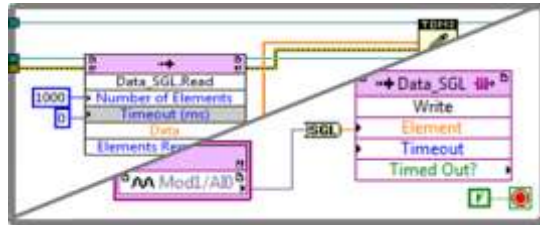
Data Dashboard on Android tablets now supports monitoring and control applications and free canvas customizations

Transparency

Adjust the transparency of images, controls, and indicators on your dashboard

LabVIEW 2014 Real-Time With Embedded UI

Simplify system complexity by implementing a local HMI on CompactRIO



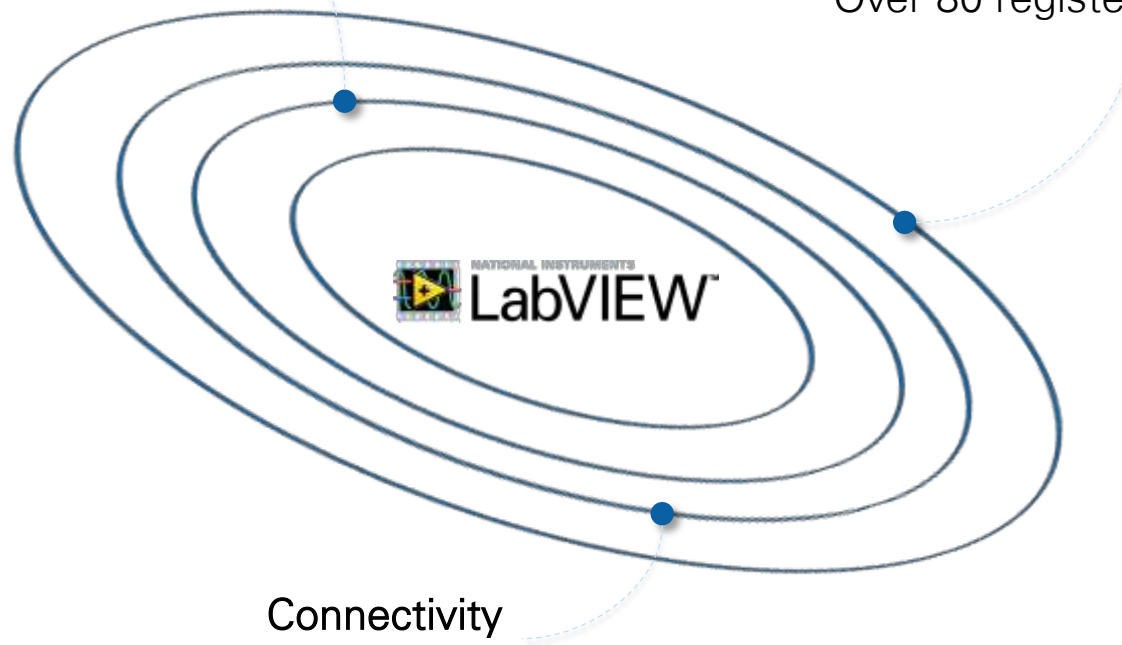
Growing LabVIEW Ecosystem

LabVIEWTools Network

3 million add-ons downloaded
Over 250 add-ons

User Community

Over 10,000 certified users
Over 800 Alliance Partners
Over 80 registered user groups



Connectivity

Over 10,000 instrument drivers
Any bus, any protocol, any platform
Integration with third-party languages

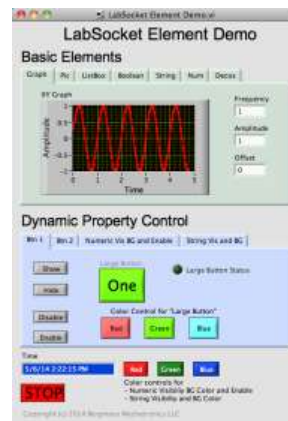


LabSocket by Bergmans Mechatronics

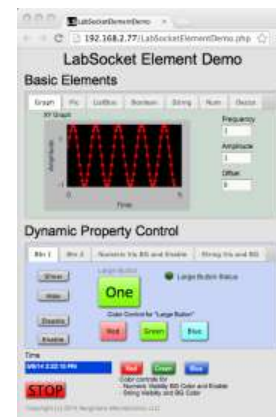
New on the LabVIEW Tools Network



- Automatically creates interactive HTML5 interfaces from LabVIEW front panels
- Access on any modern mobile or desktop browser



LabVIEW



Web Browser

Download evaluation at ni.com/labviewtools/labsocket



Das war nur eine Auswahl an Änderungen, Die vollständige Liste befindet sich auf:

Das ist neu in LabVIEW 2014

LabVIEW 2014 bietet als Basis der NI-Produktplattform eine erstklassige Lösung, um auf der Grundlage von Daten schnelle, fundierte Entscheidungen zu treffen. Mithilfe der neuesten LabVIEW-Version können Anwender beliebige Datensätze unabhängig von Ort und Zeit zügig erfassen, analysieren und darstellen.

Alle neuen Funktionen von LabVIEW 2014
Treffen Sie datenbasierte Entscheidungen schneller.

Entwicklung von Embedded-Systemen zur Steuerung, Regelung und Überwachung ...

Automatisierung und Validierung von Prüfsystemen ...

Datenerfassung und Signalverarbeitung
Erstellen Sie skalierbare Lösungen und nehmen Sie...

Ressourcen zu LabVIEW 2014

LabVIEW-Upgrade-Hilfe
Prüfen Sie, ob ein Upgrade auf LabVIEW 2014 für Sie in Frage kommt.
[Upgrade-Hilfe lesen](#)

Kostenfreies Online-Training
Jede LabVIEW-Version bietet rund um die Uhr Zugriff auf Online-Trainingskurse, sodass Sie sich Kenntnisse im gewünschten Tempo aneignen können.
[Kurse ansehen](#)

LabVIEW 2014 kaufen
Nutzen Sie einen der nachfolgenden Links, um LabVIEW 2014 zu kaufen.
[Neue Anwender: LabVIEW kaufen](#)
[Bestehende Anwender: LabVIEW upgraden](#)

Neue Funktionen in LabVIEW 2014

- [Neue Funktionen von LabVIEW FPGA](#)
- [Neue Funktionen von LabVIEW Real-Time](#)

[Überblick über alle neuen Funktionen](#)

http://zone.ni.com/reference/de-XX/help/371361L-0113/lvupgrade/labview_features/